

# **AC Race Week/Leukemia Cup 2016 Responsibilities**

## **CAPTAIN'S RESPONSIBILITIES**

The term "Captain" as used in these Conditions and Sailing instructions shall mean the person, whether or not the owner of the yacht, who is in charge of the yacht. The Captain shall be a member of a recognized yacht club, ocean racing organization or US Sailing

The safety of a yacht and its crew is the sole and inescapable responsibility of the Captain, who shall ensure that the yacht is fully sound, thoroughly seaworthy and manned by an experienced crew, who are in good physical condition, to safely and properly participate in the event in all weather conditions. The Captain of the yacht shall be satisfied as to the soundness of the hull, spars, rigging, sails and all gear. He shall ensure that all equipment is properly maintained and stowed and that he and the crew know where it is kept and how it is to be used.

Neither the establishment of equipment regulations nor any inspection of a yacht in any way limit or reduce the complete and unlimited responsibility of the yacht's Captain.

Each Captain and crew member acknowledges by entry that he participates in an Event at his own risk and warrants and represents that he will comply with the applicable rules and regulations of the Club, State and Federal laws, and racing rules, whether general or of particular application to the Event.

Each Captain will have the sole responsibility to decide whether to start or continue in any race.

## **IMPORTANT TO ALL CONTESTANTS:**

The Legal Drinking age in the state of New Jersey is 21 years of age.

Captains with minor crew members are expected to help enforce this LAW.

Each Captain is solely responsible for the conduct of his yacht's crew and guests before, during and after any Event. Conduct deemed as being unbecoming to a yachtsman or gentleman can result in the yacht being disqualified from the particular race or series. Neither Atlantic City Race Week, The Leukemia and Lymphoma Society of New Jersey, Ocean City Yacht Club, the Middle Atlantic Yacht Racing Association nor its member clubs bear responsibility for accidents, damage, or injury to yachts or their personnel arising from any cause during the AC Race Week Regatta or related activities.

## **SKIPPER'S MEETING**

A skipper's meeting will be held on the dock at 0900 hours on the first day of the regatta.

## **DISCLAIMER OF RESPONSIBILITY**

- Competitors participate in the regatta entirely at their own risk. See RRS 4, Decision to Race. The organizing authority will not accept any liability for materials damage or personal injury or death sustained in conjunction with or prior to, during or after the regatta

## **RESPONSIBILITY**

The responsibility of the Race Committee is to provide a start and to record positions and times at a finish. The decision to start, continue or retire is the responsibility of the contestant.

# AC Race Week 2016 Sailing Instructions

## 1) RULES

- 1.1 The regatta will be governed by the Rules as defined in the Racing Rules of Sailing.
- 1.2 Any questions in regard to these Sailing Instructions must be submitted in writing. The question and answer will be posted on the Official Regatta Notice Board.

## 2) NOTICES TO COMPETITORS

- 2.1 Notices will be posted on the regatta notice board located at the official race committee desk located at Farley Marina.

## 3) CHANGES TO SAILING INSTRUCTIONS

- 3.1 Any change in the sailing instructions will be posted before 0900 on the day it will take effect, except for any changes in the schedule of races which will be posted by 2000 on the day before it will take effect.

## 4) SIGNALS MADE ASHORE

- 4.1 Signals made ashore will be displayed on the official race committee flag pole located on the roof of the main marina entrance to Farley Marina..
- 4.2 When flag "AP" is displayed ashore, '1 minute' is replaced with 'not less than 60 minutes in the Race Signals "AP".
- 4.3 When flag "L" is displayed ashore, to alert sailors that important message or notices are posted.

## 5) SCHEDULE OF RACES

- 5.1 One race may constitute the series. Five (5) races are planned.

**Saturday, July 24,..... first warning 1130**  
**Sunday, July 25 ,..... first warning 1100**

Multiple races planned daily

## 6) CLASS FLAGS

### **CIRCLE 1**

|                | Class Flag | Signal boat displays  |
|----------------|------------|-----------------------|
| Melges-24      | "1"        | numeral pennant # "1" |
| PHRF Spinnaker | "2"        | numeral pennant # "2" |
| J-70           | "3"        | numeral pennant # "3" |

### **CIRCLE 2**

|                      |     |                       |
|----------------------|-----|-----------------------|
| PHRF Non-Spinnaker A | "1" | numeral pennant # "1" |
| PHRF Non-Spinnaker B | "2" | numeral pennant # "2" |

**7) RACING AREAS**

- 7.1 Melges-24, J-70 & PHRF Spinnaker will race on Circle "1" (Southern course )
- 7.2 PHRF Non-spinnaker "A" & "B" will race on Circle "2" (Northern course)

**8) THE COURSES – ALL CLASSES**

- 8.1 Courses to be used for each race shall be selected by the race committee from those outlined in Exhibit 1.
- 8.2 The course and the approximate compass bearing from the starting line to the first windward mark of the course will be displayed from the race committee signal boat.
- 8.3 The race committee may attempt to broadcast the course on the designated VHF channel.
- 8.4 A boat that retires from a race or does not intend to start in a scheduled race should report directly to the race committee on station or on the designated VHF channel. If this is not possible she shall report her actions to the race committee office as soon as possible.

**9) MARKS**

- 9.1 Inflatable marks will be used on all courses. The Marks on Circle #1 will be orange with the change mark being yellow, the marks on circle 2 will be yellow with the change mark being orange
- 9.2 The starting and finishing marks will be inflatable marks.
- 9.3 On Circle 1 there may be 2 starting marks used. If used they and will be designated by a S or L after the course (IE: L4L = leeward finish 4 legs use the long starting pin) The unused starting mark will not be considered a mark of the course.
- 9.4 An offset mark may be used at the windward mark. If there is a subsequent change of course no offset mark will be used.

**10) START / FINISH**

- 10.1 Before the warning signal for the first race of the day, each boat shall sail past the stern of the Race Committee Signal Boat and hail her class and sail number.
- 10.2 Intended Order of start

Circle "1"

- 1) Melges-24.....Flag # "1"
- 2) PHRF Spinnaker.....Flag # "2"
- 3) J-70.....Flag # "3"

Circle "2"

- 1) PHRF Non-spinnaker A.....Flag # "1"
- 2) PHRF Non-Spinnaker B ..... Flag # "2"

- 10.3 The starting line will be between a staff displaying an orange flag on the RC boat at the starboard end of the line and a buoy on the port end.
- 10.4 On circle #1 the Finishing line will be between a staff displaying an orange flag on the RC boat at the starboard end of the line and a buoy on the port end (For downwind finishes this is the opposite side of the RC boat then the start). On circle #2 please refer to course diagram TL5 & TW4
- 10.5 Boats whose warning signal has not been made shall avoid the starting area.

- 10.6 As a courtesy the race committee may attempt to announce the sail # of boats that are on the course side of the line at the starting signal on the appropriate fleet VHF channel. Failure to do so or the order the boats are called will not be grounds for redress

**11) PENALTIES**

- 11.1 For all fleets RRS 44.1 is changed so that “**Two-turn Penalty**” is replaced by “**One-turn Penalty**” (This changes RRS 4.1)
- 11.2 Penalties for rule infringements other than those of RRS Part 2 are at the discretion of the Jury.

**12) TIME LIMITS**

- 12.1 If a boat does not reach Mark 1 within one hour or the first boat to finish does not finish within two hours, the race shall be abandoned.
- 12.2 If a yacht is unreasonably delaying the completion of a race, the race committee may assign an appropriate position for that race. (This changes RRS 35 & A3)
- 12.3 Immediately upon docking the RC of Circle (1) and the RC of Circle (2) will post:
- 1) Docking time
  - 2) The list of RC observations
  - 3) All boats reporting a protest

**13) PROTEST AND REQUESTS FOR REDRESS**

- 13.1 Protest forms and penalty acknowledgement are available at the protest desk at the official race committee desk. These shall be delivered to the jury desk within the protest time limit which is 60 minutes on Saturday and 30 minutes on Sunday after each circles RC boat docks
- 13.2 Protest hearing alternative:
- a. For a protest involving infringement of a rule of Part 2, a protested boat may before the start of the hearing accept a penalty as in RRS 44.3c rather than proceeding with the protest hearing. (This changes Part 5 Section B of RRS)
- 13.3 A boat intending to protest or seek redress is requested to notify and receive acknowledgement from the race committee at the finish line after finishing and clearing, giving the name and number of the boat being protested.
- 13.4 Notices will be posted as soon as possible, but not later than 5 minutes after the protest time limit to inform competitors of the hearing in which they are parties or named witnesses. Hearings will be held at the marina in a protest room.
- 13.5 On the last day of the regatta requests for protest, redress or reopening a hearing shall be:
- a. Within the protest time limit if the party requesting reopening was informed of the decision on the previous day.
  - b. No later than 30 minutes after the party requesting reopening was informed of the decision on that day. This changes rule RRS 62.2 & RRS 66.

**14) SCORING**

- 14.1 The Low Point Scoring System (RRS A) will apply except that each boat's total score will be the sum of her score for all races. **No throw-out** will be allowed. This changes (RRS A 2).

**15) SAFETY REGULATIONS**

- 17.1 All boats are required to carry all safety equipment as required by national, state or local regulations
- 17.2 If class rules require additional equipment that too must be on board.

**16) RADIO COMMUNICATION**

- 18.1 The following channels shall be used for radio communication:

Circle "1" channel 71

Circle "2" channel 72

- 18.2 A boat shall neither make radio transmissions while racing nor receive radio communications not available to all boats. This restriction also applies to mobile telephone.

**17) CREW WEIGH-IN AND REPLACEMENT**

- 17.1 For One Design fleets any crew substitutions must be requested in writing prior to 0900 hrs on the date of the race and approved by the jury. One design fleets must also have the desired substitute crew member weighed-in prior to the request if such weigh-ins are required for this regatta.

**18) DISPOSAL OF WASTE OR TRASH**

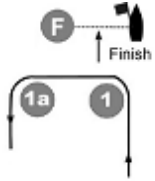
- 18.1 Boats observed discharging waste or trash over the side may be protested by the race committee.

# Exhibit #1 Courses

Course:

## W3

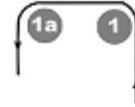
Start-1-1A-  
4S/4P-Finish



Course:

## L4

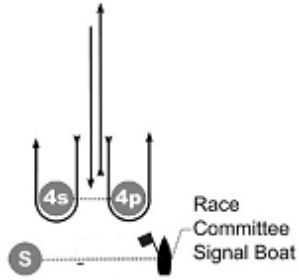
Start-1-1A-  
4S/4P-1-1A-  
Finish



Course:

## W5

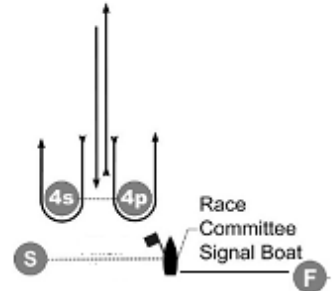
Start-1-1A-  
4S/4P-1-1A-  
4S/4P-Finish



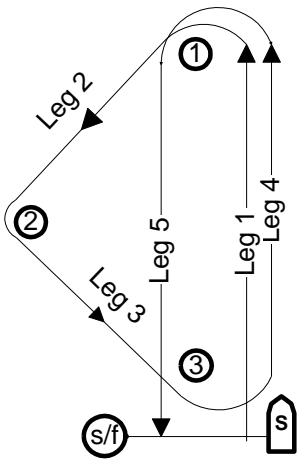
Course:

## L6

Start-1-1A-  
4S/4P-1-1A-  
4S/4P-1-1A-  
Finish



## TL5



## TW4

